

Mobile Hydraulic Pumps T6DM, T6DP

Hydraulic Pumps

 Parker



Mobile Hydraulic Pumps T6DM, T6DP

Hydraulic Pumps

 Parker

Model No.

T6D* - B45 - 1 R 00 - C 1

Series M = Mobile 1 shaft seal
Series P = Mobile 2 shaft seals

Cam ring

(Delivery at 0 bar & 1500 r.p.m.)

B14 = 71,4 l/min B35 = 166,5 l/min
B17 = 87,3 l/min B38 = 180,4 l/min
B20 = 99,0 l/min B42 = 204,0 l/min
B24 = 119,3 l/min B45 = 218,5 l/min
B28 = 134,5 l/min B50 = 237,0 l/min
B31 = 147,4 l/min

Type of shaft

M version

1 = keyed (SAE C)
2 = keyed (no SAE)
3 = splined (SAE C)
4 = splined (no SAE)
T = splined (SAE J718c)

Type of shaft

P version

3 = splined (no SAE)

Modification

Seal class

1 = S1 (for mineral oil)
4 = S4 (for the resistant fluids)
5 = S5 (for mineral oil and fire resistant fluids)

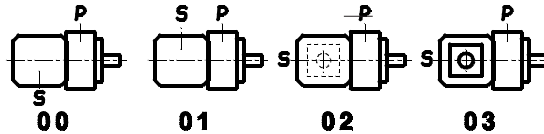
Design letter

Porting combination

00 = standard

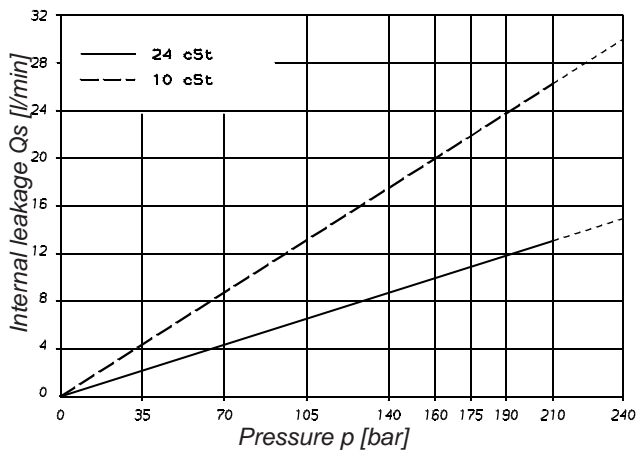
Direct. of rotation (view on shaft end)

R = clockwise
L = counter-clockwise



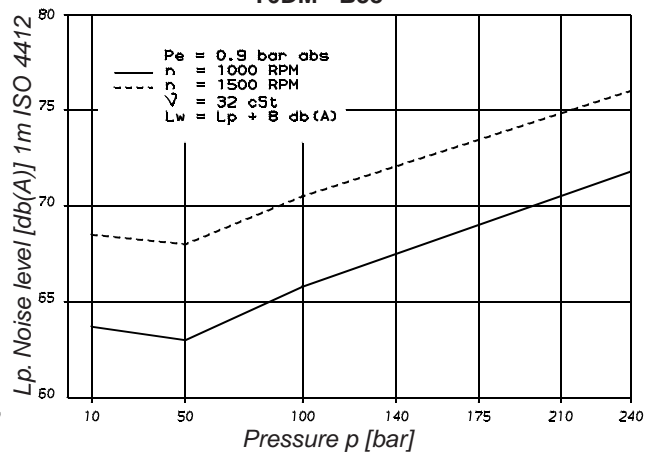
P = Pressure port
S = Suction port

INTERNAL LEAKAGE (TYPICAL)

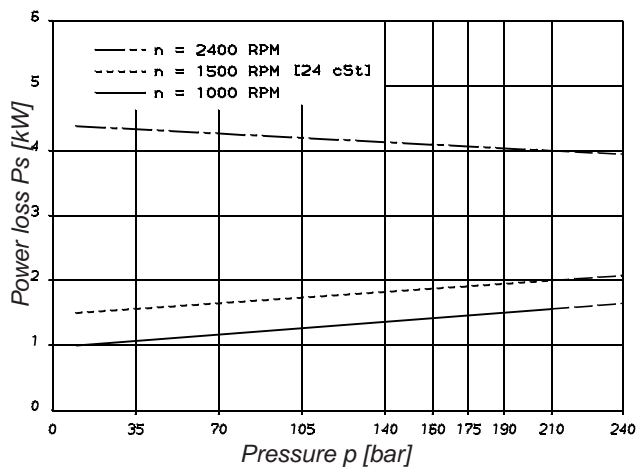


NOISE LEVEL (TYPICAL)

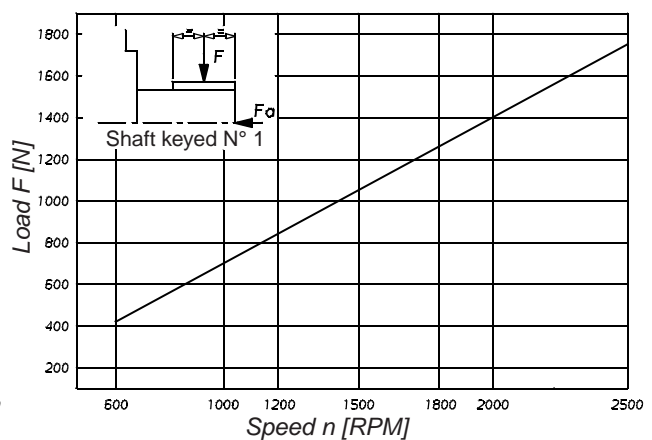
T6DM - B38



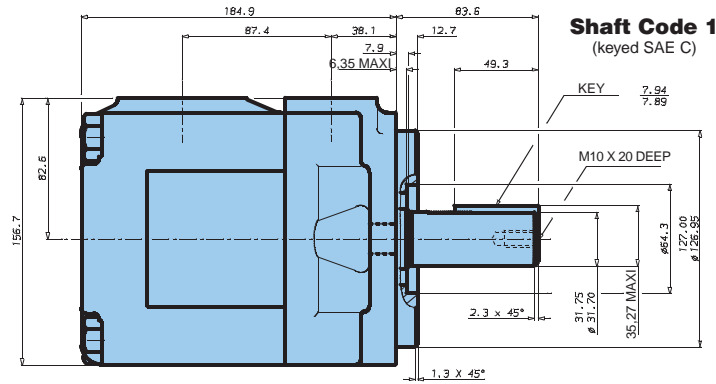
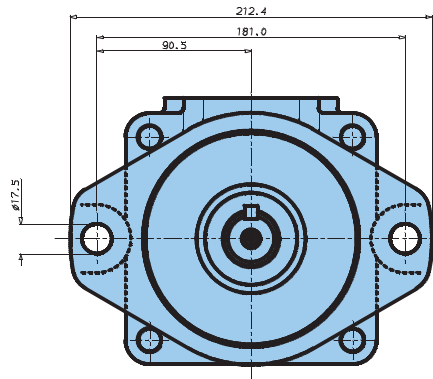
POWER LOSS HYDROMECHANICAL (TYPICAL)



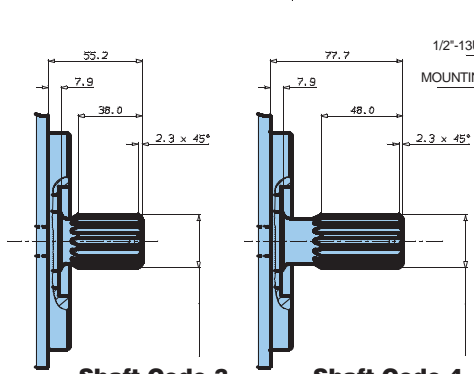
PERMISSIBLE RADIAL LOAD



Maximum permissible axial load $F_a = 1200$ N

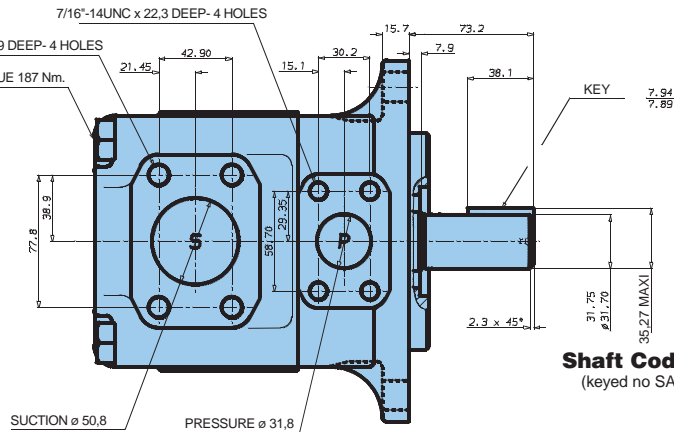


Shaft Code 1
(keyed SAE C)



Shaft Code 3
SAE C Splined shaft
Class 1 - J498B
12/24 d.p. - 14 teeth
30° pressure angle
flat root side fit

Shaft Code 4
no SAE Splined shaft
Class 1 - J498 b
12/24 d.p. - 14 teeth
30° pressure angle
flat root side fit



Shaft Code 2
(keyed no SAE)

Additional T6DM shaft code T: see page 33
Additional T6DP version shaft see page 33

Shaft torque limits [ml/rev x bar]		
Pump	Shaft	Vi x p max.
T6DM	1	43240
	2	34590
	3	61200
	4	61200

OPERATING CHARACTERISTICS - TYPICAL [24 cSt]

Series	Volumetric Displacement Vi	Speed n [R.P.M.]	Flow Q [l/min]			Input power P [kW]		
			p = 0 bar	p = 140 bar	p = 240 bar	p = 7 bar	p = 140 bar	p = 240 bar
B14	47.6 ml/rev	1000	47.6	38.3	32.1	1.5	12.5	20.7
		1500	71.4	62.1	55.9	2.3	18.5	30.6
B17	58.2 ml/rev	1000	58.2	48.9	42.7	1.6	14.9	24.9
		1500	87.3	78.0	71.8	2.5	22.2	37.0
B20	66.0 ml/rev	1000	66.0	56.7	50.5	1.7	16.8	28.0
		1500	99.0	89.7	83.5	2.8	24.9	41.7
B24	79.5 ml/rev	1000	79.5	70.2	64.0	1.9	19.9	33.4
		1500	119.3	110.0	103.8	3.0	29.6	49.8
B28	89.7 ml/rev	1000	89.7	80.4	74.2	2.0	22.3	37.5
		1500	134.5	125.2	119.0	3.2	33.2	55.9
B31	98.3 ml/rev	1000	98.3	89.0	82.8	2.1	24.3	40.9
		1500	147.4	138.1	131.9	3.3	36.2	61.0
B35	111.0 ml/rev	1000	111.0	101.7	95.5	2.3	27.3	46.0
		1500	166.5	157.2	151.0	3.5	40.7	68.7
B38	120.3 ml/rev	1000	120.3	111.0	104.8	2.4	29.4	49.8
		1500	180.4	171.1	164.9	3.7	43.9	74.3
B42 ¹⁾	136.0 ml/rev	1000	136.0	126.7	120.5	2.6	33.1	56.0
		1500	204.0	194.7	188.5	4.0	49.4	83.7
B45 ¹⁾	145.7 ml/rev	1000	145.7	136.4	130.2	2.7	35.3	59.9
		1500	218.5	209.2	203.0	4.1	52.8	89.5
B50 ¹⁾	158.0 ml/rev	1000	158.0	148.7	145.0 ²⁾	2.8	38.2	56.8 ²⁾
		1500	237.0	227.7	224.0 ²⁾	4.4	57.0	85.0 ²⁾

¹⁾ B42 - B45 - B50 = 2200 R.P.M. max.

²⁾ B50 = 210 bar max. int.

Port connection can be furnished with metric threads.