

Industrial Hydraulic Pumps T6DCC

Hydraulic Pumps

 Parker



Industrial Hydraulic Pumps T6DCC

Hydraulic Pumps

 Parker

Model No.

T6DCC - 038 - 028 - 008 - 1 R 00 - A 1-00

Series

Cam ring for "P1"

(Delivery at 0 bar & 1500 r.p.m.)

014 = 71,4 l/min	035 = 166,5 l/min
017 = 87,3 l/min	038 = 180,4 l/min
020 = 99,0 l/min	042 = 204,0 l/min
024 = 119,3 l/min	045 = 218,5 l/min
028 = 134,5 l/min	050 = 237,0 l/min
031 = 147,4 l/min	

Cam ring for "P2" & "P3"

(Delivery at 0 bar & 1500 r.p.m.)

003 = 16,2 l/min	017 = 87,4 l/min
005 = 25,8 l/min	020 = 95,7 l/min
006 = 31,9 l/min	022 = 105,4 l/min
008 = 39,6 l/min	025 = 118,9 l/min
010 = 51,1 l/min	028 = 133,2 l/min
012 = 55,6 l/min	031 = 150,0 l/min
014 = 69,0 l/min	

P1

P2

P3

Modification

Mounting W/connection variables

Type	UNC		Metric	
P3	1"	3/4"	1"	3/4"
Code	00	01	M0	M1

Seal class

- 1 = S1 (for mineral oil)
- 4 = S4 (for resistant fluids)
- 5 = S5 (for mineral oil and fire resistant fluids)

Design letter

Porting combination (see pages 30 - 31)

00 = standard

Direct. of rotation (view on shaft end)

- R = clockwise
- L = counter-clockwise

Type of shaft

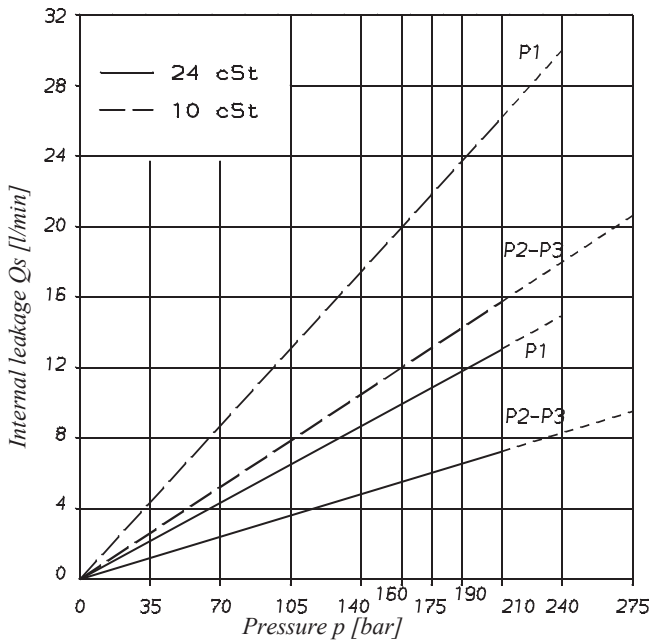
- 1 = keyed (no SAE)
- 2 = keyed (SAE CC)
- 3 = splined (SAE C)
- 4 = splined (SAE CC)

OPERATING CHARACTERISTICS - TYPICAL [24 cSt]

Pressure port	Series	Volumetric Displacement Vi	Flow qv _e [l/min] & n = 1500 RPM			Input power P [kW] & n = 1500 RPM		
			p = 0 bar	p = 140 bar	p = 240 bar	p = 7 bar	p = 140 bar	p = 240 bar
P1	014	47,6 ml/rev	71,4	62,1	55,9	2,3	18,5	30,6
	017	58,2 ml/rev	87,3	78,0	71,8	2,5	22,2	37,0
	020	66,0 ml/rev	99,0	89,7	83,5	2,8	24,9	41,7
	024	79,5 ml/rev	119,3	110,0	103,8	3,0	29,6	49,8
	028	89,7 ml/rev	134,5	125,2	119,0	3,2	33,2	55,9
	031	98,3 ml/rev	147,4	138,1	131,9	3,3	36,2	61,0
	035	111,0 ml/rev	166,5	157,2	151,0	3,5	40,7	68,7
	038	120,3 ml/rev	180,4	171,1	164,9	3,7	43,9	74,3
	042 ²⁾	136,0 ml/rev	204,0	194,7	188,5	4,0	49,4	83,7
	045 ²⁾	145,7 ml/rev	218,5	209,2	203,0	4,1	52,8	89,5
050 ²⁾	158,0 ml/rev	237,0	227,7	224,0 ¹⁾	4,4	57,0	85,0 ¹⁾	
P2 & P3	003	10,8 ml/rev	16,2	11,2	7,7	1,3	5,3	8,4
	005	17,2 ml/rev	25,8	20,8	17,3	1,4	7,5	12,2
	006	21,3 ml/rev	31,9	26,9	23,4	1,5	8,9	14,7
	008	26,4 ml/rev	39,6	34,6	31,1	1,6	10,7	17,7
	010	34,1 ml/rev	51,1	46,1	42,6	1,7	13,4	22,3
	012	37,1 ml/rev	55,6	50,6	47,1	1,7	14,4	24,1
	014	46,0 ml/rev	69,0	64,0	60,5	1,9	17,6	29,5
	017	58,3 ml/rev	87,4	82,4	78,9	2,1	21,9	36,9
	020	63,8 ml/rev	95,7	90,7	87,2	2,2	23,8	40,2
	022	70,3 ml/rev	105,4	100,4	96,9	2,3	26,1	44,1
	025	79,3 ml/rev	118,9	113,9	110,4	2,5	29,2	49,5
	028	88,8 ml/rev	133,2	128,2	125,8 ¹⁾	2,8	32,7	48,5 ¹⁾
	031	100,0 ml/rev	150,0	145,0	142,6 ¹⁾	2,8	36,5	54,4 ¹⁾

1) 028 - 031 - 050 = 210 bar max. int. 2) 042 - 045 - 050 = 2200 R.P.M. max

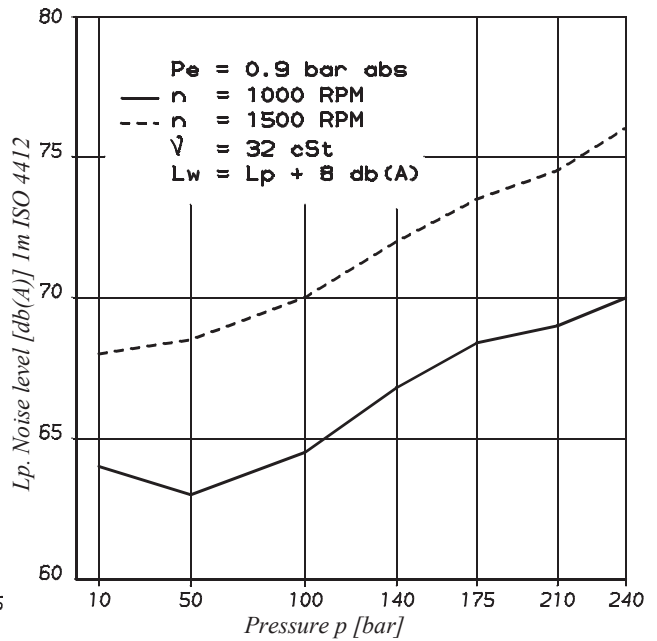
INTERNAL LEAKAGE (TYPICAL)



Total leakage is the sum of each section loss at its operating conditions.

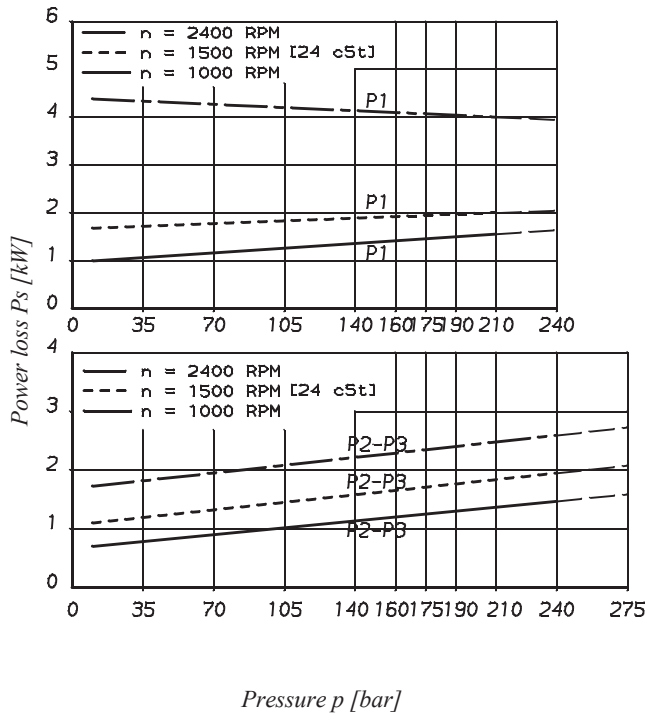
NOISE LEVEL (TYPICAL)

T6DCC - 038 - 022 - 022



Triple pump noise level is given with each section discharging at the pressure noted on the curve.

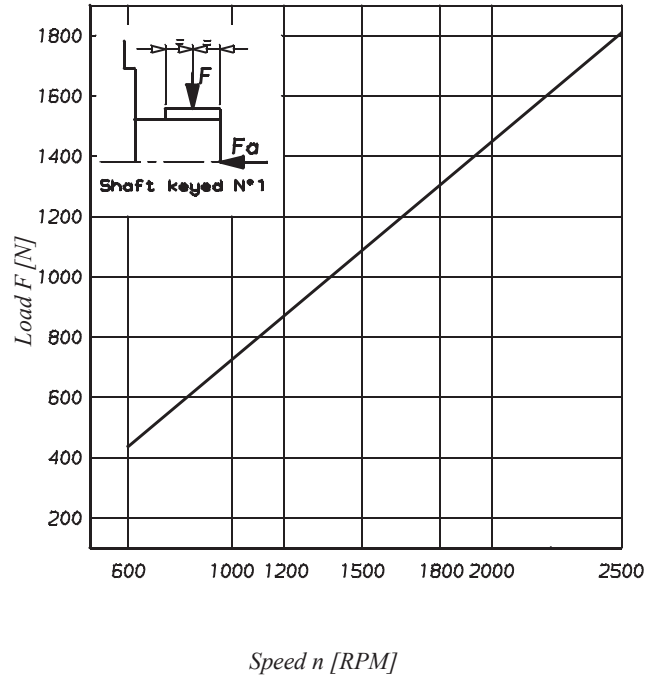
POWER LOSS HYDROMECHANICAL (TYPICAL)



Pressure p [bar]

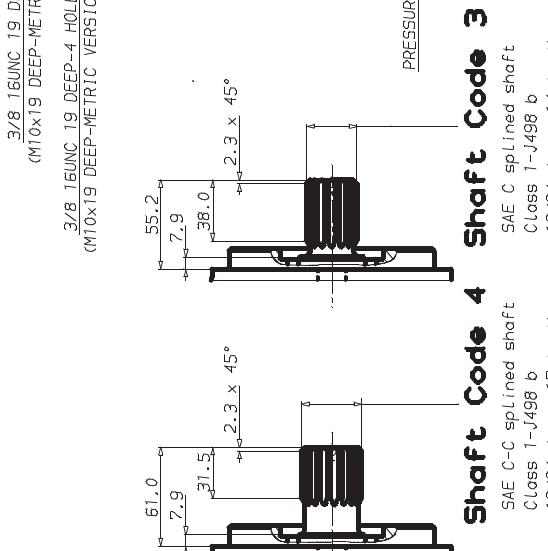
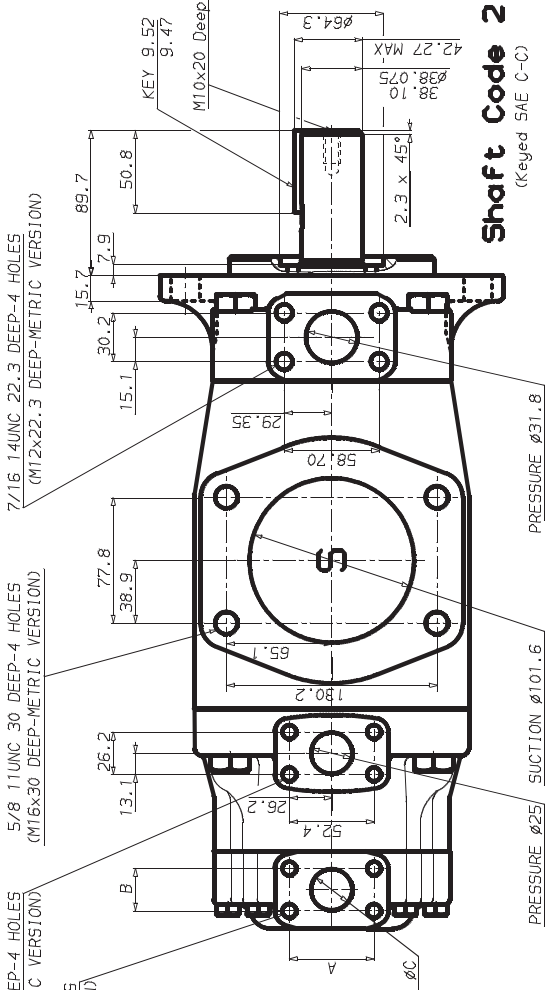
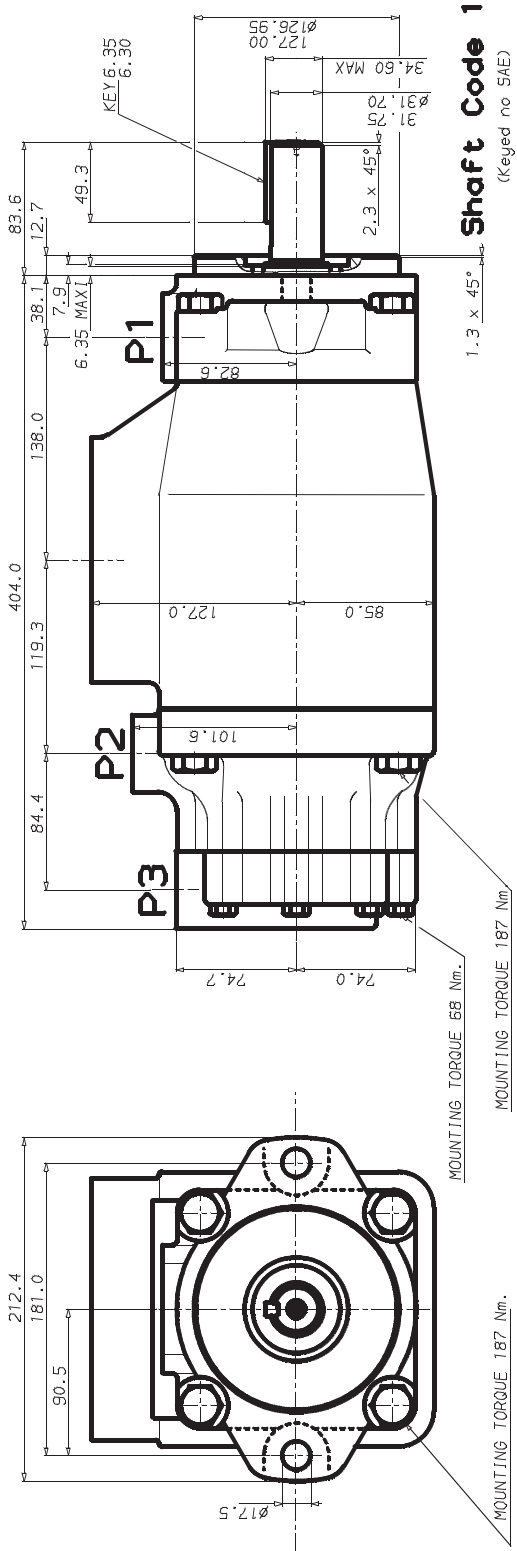
Total hydrodynamic power loss is the sum of each section at its operating conditions.

PERMISSIBLE RADIAL LOAD



Speed n [RPM]

Maximum permissible axial load $F_a = 1200\text{ N}$



Port	Alternate port	
	Code	Dimension
P3	00 & M0	52,4
P3	01 & M1	47,6
	A	26,2
	B	25,4
	Ø C	19,0

Pump	Shaft torque limits [ml/rev x bar]		
	Shaft	Vi x p max. P1 + P2 + P3	Vi x p max. P1 + P2 + P3
T6DCC	1	43240	61200
	2	66500	66500