

# Industrial Hydraulic Pumps T6DDS

Hydraulic Pumps

**Parker**



# Industrial Hydraulic Pumps T6DDS

Hydraulic Pumps

**Parker**

**Model No.**

**T6DDS - 038 - 028 - 1 R 00 - A 1 - 00 - ..**

**Series** - SAE C 6 bolts  
Mounting flange J744c

**Displacement P1 and P2**  
Volumetric displacement (ml/rev.)

- 014 = 47,6
- 017 = 58,2
- 020 = 66,0
- 024 = 79,5
- 028 = 89,7
- 031 = 98,3
- 035 = 111,0
- 038 = 120,3
- 042 = 136,0
- 045 = 145,7
- 050 = 158,0

**Type of shaft**

- 1 = keyed (SAE C)
- 2 = keyed (SAE CC)
- 3 = splined (SAE C)
- 4 = splined (SAE BB)
- 5 = keyed (non SAE)

**Modifications**

**Mounting w/connection variables**  
4 bolts SAE flange J518c

P1 & P2 = 1"1/4 - S = 4"		
Type	UNC	Metric
Code	00	M0

**Seal class**

- 1 = S1 (for mineral oil)
- 4 = S4 (for the resistant fluid)
- 5 = S5 (for mineral oil and fire resistant fluids)

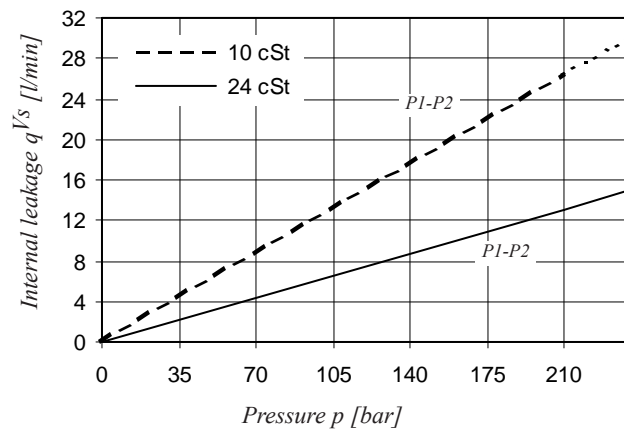
**Design letter**

**Porting combination**  
00 = standard

**Direction of rotation (view on shaft end)**

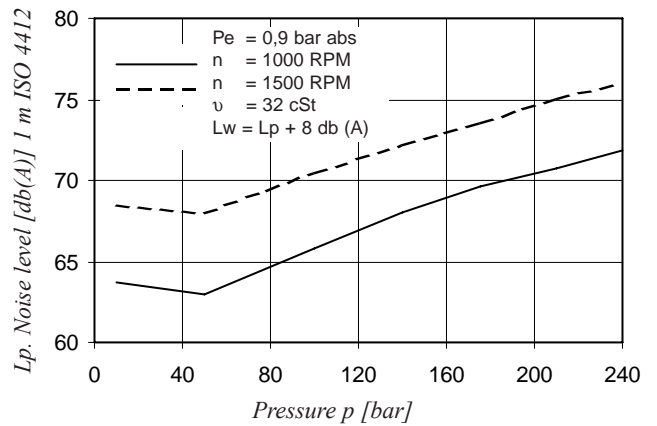
- R = Clockwise
- L = Counter-clockwise

**INTERNAL LEAKAGE (TYPICAL)**



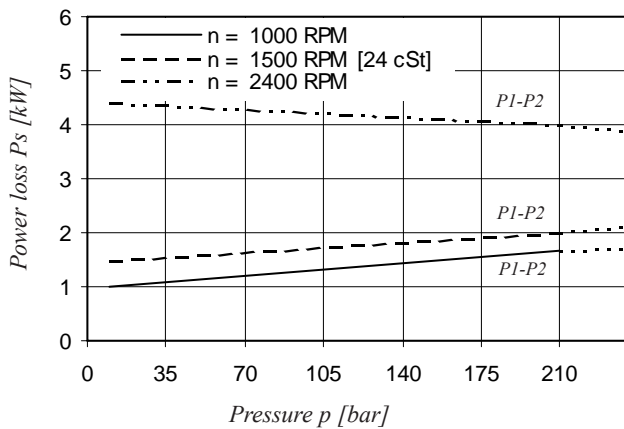
Do not operate pump more than 5 seconds at any speed or viscosity if internal leakage is higher than 50% of theoretical flow. Total leakage is the sum of each section loss at its operating conditions.

**NOISE LEVEL (TYPICAL)**  
**T6DDS 038 - 038**



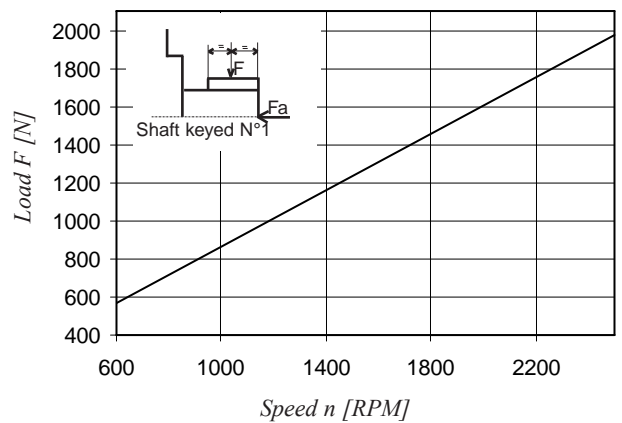
Double pump noise level is given with each section discharging at the pressure noted on the curve.

**POWER LOSS HYDROMECHANICAL (TYPICAL)**

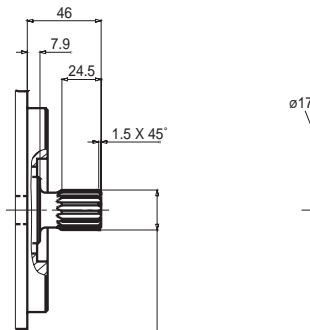


Total hydromechanical power loss is the sum of each section at its operating conditions.

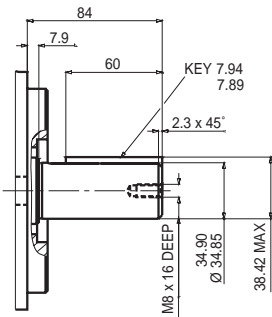
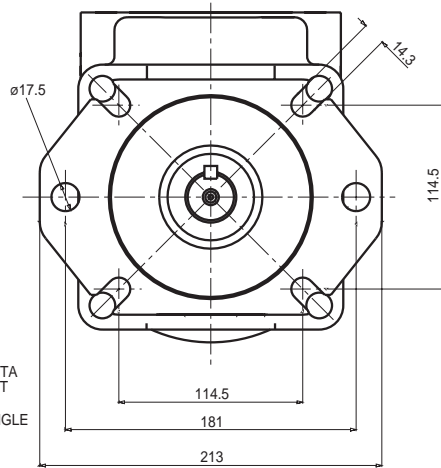
**PERMISSIBLE RADIAL LOAD**



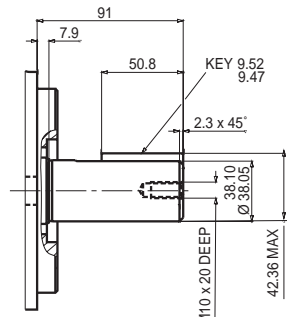
Maximum permissible axial load  $F_a = 1200\text{ N}$



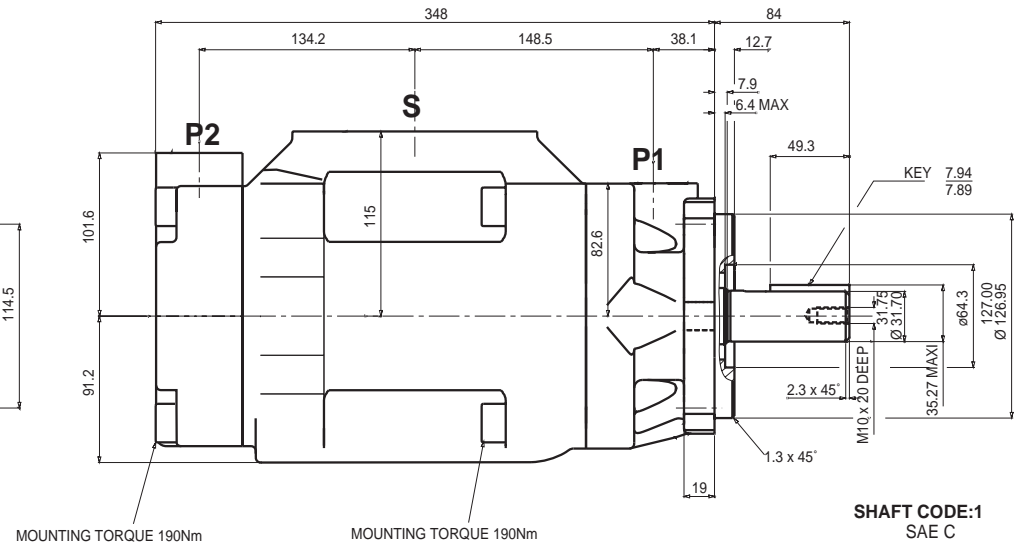
**SHAFT CODE 4**  
SAE BB INVOLUTE SPLINE DATA  
CLASS 1 - FLAT ROOT SIDE FIT  
J498b - PITCH:16/32  
15 TEETH - 30° PRESSURE ANGLE



**SHAFT CODE 5**  
(NO SAE)



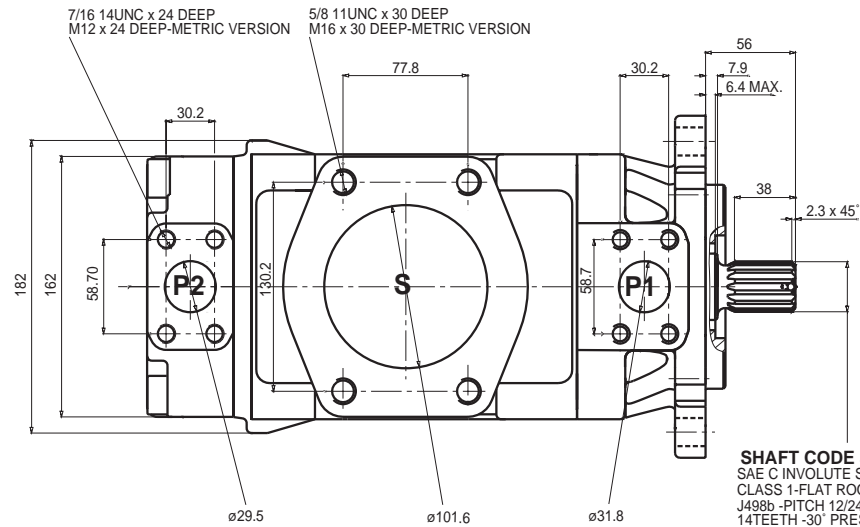
**SHAFT CODE 2**  
SAE CC



MOUNTING TORQUE 190Nm

MOUNTING TORQUE 190Nm

**SHAFT CODE:1**  
SAE C



7/16 14UNC x 24 DEEP  
M12 x 24 DEEP-METRIC VERSION

5/8 11UNC x 30 DEEP  
M16 x 30 DEEP-METRIC VERSION

**SHAFT CODE 3**  
SAE C INVOLUTE SPLINE DATA  
CLASS 1-FLAT ROOT SIDE FIT  
J498b -PITCH 12/24  
14TEETH -30° PRESSURE ANGLE

Shaft torque limits [ml/rev x bar]	
Shaft	Vi x p max.
1	43240
3	61200
4	35880
5	55600