

Industrial Hydraulic Pumps T6CR, T6CRY

Hydraulic Pumps



Industrial Hydraulic Pumps T6CR, T6CRY

Hydraulic Pumps



Model No. T6CR (Y) - 022 - 1 L 00 - A 1 0 - A 1

Series
Y = Port flanges with metric threads

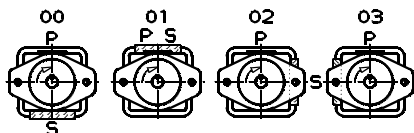
Cam ring
(Delivery at 0 bar & 1500 r.p.m.)
003 = 16,2 l/min 017 = 87,4 l/min
005 = 25,8 l/min 020 = 95,7 l/min
006 = 31,9 l/min 022 = 105,4 l/min
008 = 39,6 l/min 025 = 118,9 l/min
010 = 51,1 l/min 028 = 133,2 l/min
012 = 55,6 l/min 031 = 150,0 l/min
014 = 69,0 l/min

Type of shaft
1 = keyed (SAE BB) 4 = splined (SAE BB)
2 = keyed (non SAE) 5 = keyed (non SAE)
3 = splined (SAE B)

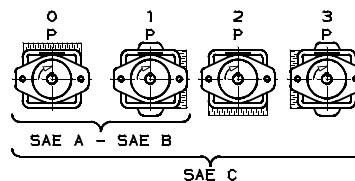
Direct. of rotation (view on shaft end)
R = clockwise
L = counter-clockwise

Porting combination
00 = standard

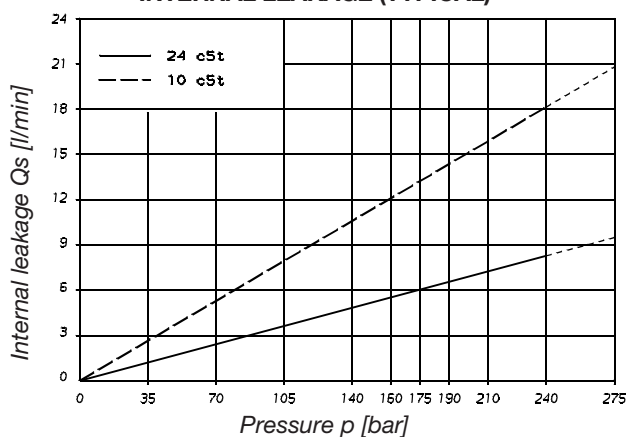
Modification
Seal class
1 = S1 (for mineral oil)
4 = S4 (for the resistant fluids)
5 = S5 (for mineral oil and fire resistant fluids)
Design letter
Porting adaptor
Coupling
1 = SAE A 4 = SAE C
2 = SAE B 5 = SAE J498b
3 = SAE BB 16/32 - 11 teeth
Adaptor
0 = None B = SAE B
A = SAE A C = SAE C



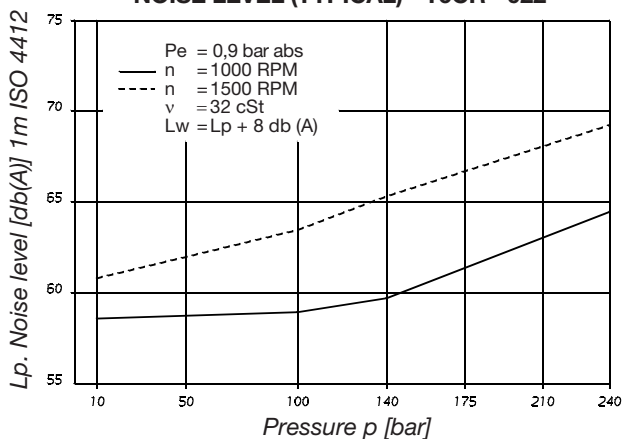
Porting adaptor



INTERNAL LEAKAGE (TYPICAL)

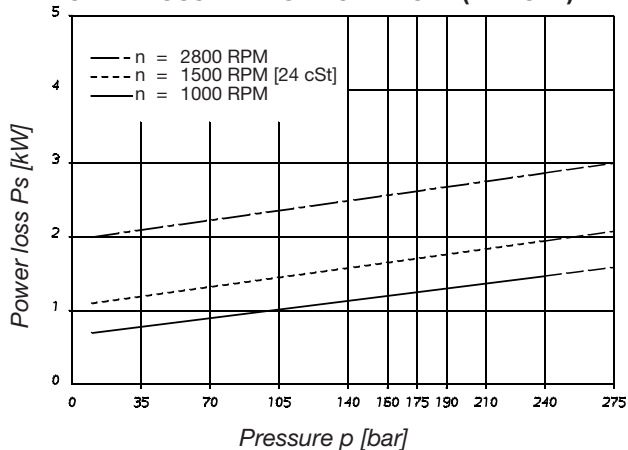


NOISE LEVEL (TYPICAL) - T6CR - 022

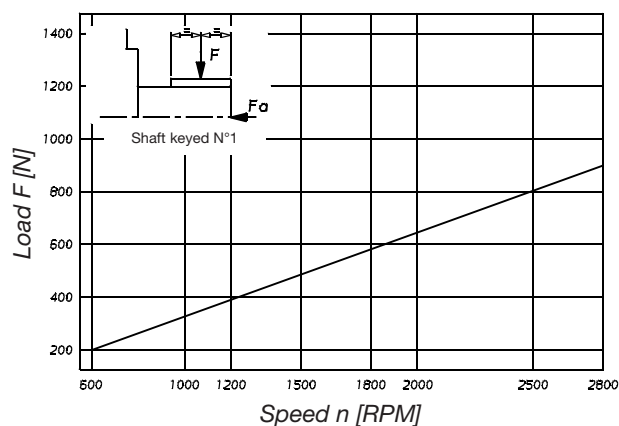


Do not operate the pump more than 5 seconds at any speed or viscosity if internal leakage is more than 50% of theoretical flow

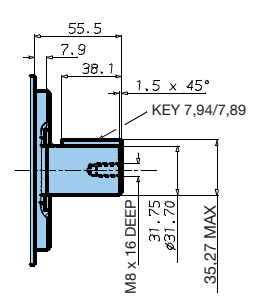
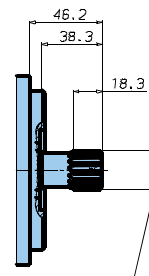
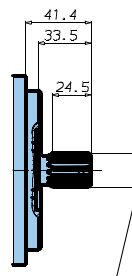
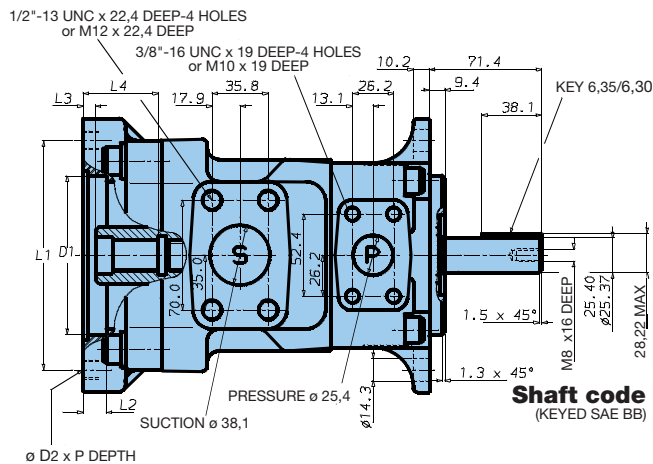
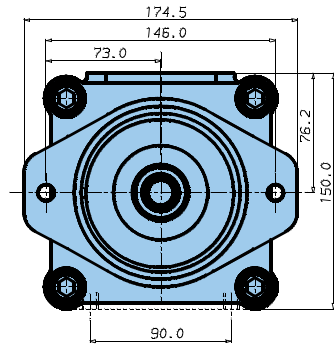
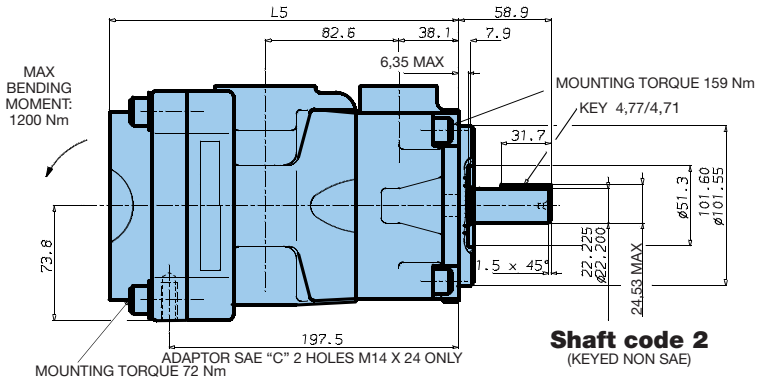
POWER LOSS HYDROMECHANICAL (TYPICAL)



PERMISSIBLE RADIAL LOAD



Maximum permissible axial load Fa = 800 N



Shaft code 3
SAE B SPLINED SHAFT
CLASS 1-J498 b
16/32 d.p. - 13 TEETH
30° PRESSURE ANGLE
FLAT ROOT SIDE FIT

Shaft code 4
SAE B-B SPLINED SHAFT
CLASS 1-J498 b
16/32 d.p. - 15 TEETH
30° PRESSURE ANGLE
FLAT ROOT SIDE FIT

Shaft code 5
(KEYED NO SAE)

Adaptor	D1	D2	P	L1	L2	L3	L4	L5
SAE A	82,65/82,60	M10	24	106,4	11,0	8,0	32,0	209,0
SAE B	101,70/101,65	M12	28	146,0	16,0	8,0	46,0	223,0
SAE C	127,10/127,05	M16	-	181,0	16,0	8,0	56,0	233,0

Weight 20,4 kg

Adaptor	SAE A			SAE B		SAE C
Coupling drive	SAE A	SAE 11 teeth	SAE B	SAE B	SAE BB	SAE C
Number of teeth	9	11	13	13	15	14
Pitch	16/32	16/32	16/32	16/32	16/32	12/24
Pressure angle	30°	30°	30°	30°	30°	30°
Major dia. (min)	15,875	19,05	22,225	22,225	25,400	31,750
Minor dia. (min)	12,700	16,017	19,134	19,134	22,268	27,589

Shaft torque limits [ml/rev x bar]			
Shaft	Vi x p max.	Coupling drive	Vi x p max.
1	21420	SAE A	11000
2	14300	SAE B	20600
3	20600	SAE BB	22050
4	32670	SAE C	22050
5	34180	SAE - 11 teeth	15850

OPERATING CHARACTERISTICS - TYPICAL [24 cSt]

Series	Volumetric Displacement Vi	Flow Q [l/min] & n = 1500 RPM			Input power P [kW] & n = 1500 RPM		
		p = 0 bar	p = 140 bar	p = 240 bar	p = 7 bar	p = 140 bar	p = 240 bar
003	10,8 ml/rev	16,2	11,2	7,7	1,3	5,3	8,4
005	17,2 ml/rev	25,8	20,8	17,3	1,4	7,5	12,2
006	21,3 ml/rev	31,9	26,9	23,4	1,5	8,9	14,7
008	26,4 ml/rev	39,6	34,6	31,1	1,6	10,7	17,7
010	34,1 ml/rev	51,1	46,1	42,6	1,7	13,4	22,3
012	37,1 ml/rev	55,6	50,6	47,1	1,7	14,4	24,1
014	46,0 ml/rev	69,0	64,0	60,5	1,9	17,6	29,5
017	58,3 ml/rev	87,4	82,4	78,9	2,1	21,9	36,9
020	63,8 ml/rev	95,7	90,7	87,2	2,2	23,8	40,2
022	70,3 ml/rev	105,4	100,4	96,9	2,3	26,1	44,1
025 ¹⁾	79,3 ml/rev	118,9	113,9	110,4	2,5	29,2	49,5
028 ¹⁾	88,8 ml/rev	133,2	128,2	125,8 ²⁾	2,8	32,7	48,5 ²⁾
031 ¹⁾	100,0 ml/rev	150,0	145,0	142,6 ²⁾	2,8	36,5	54,4 ²⁾

¹⁾ 025 - 028 - 031 = 2500 R.P.M. max.

²⁾ 028 - 031 = 210 bar max. int.

Port connection can be furnished with metric threads.

Industrial Hydraulic Pumps

T6CR, T6CRY

Hydraulic Pumps